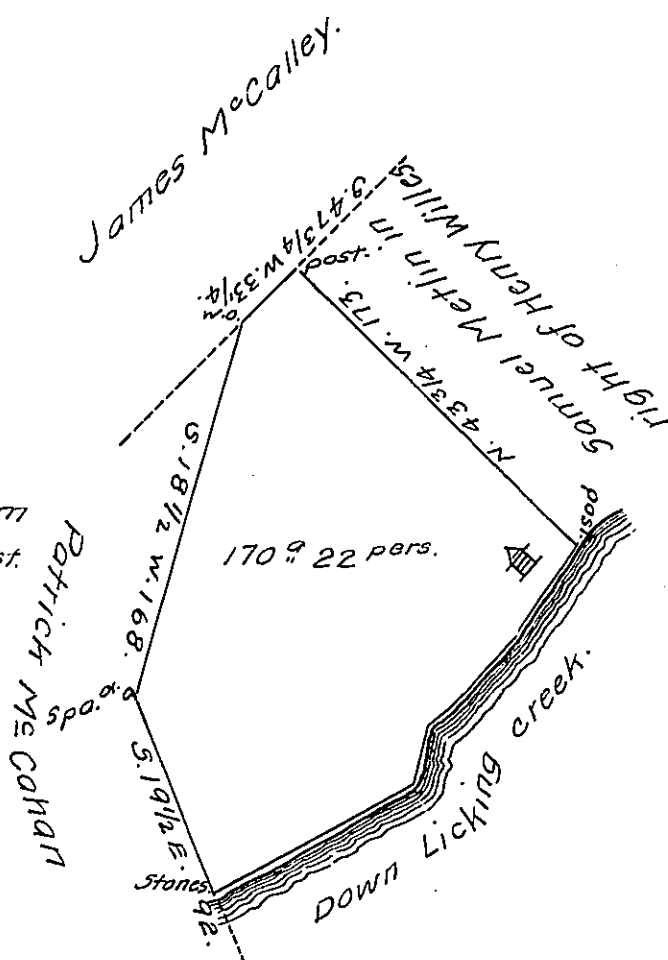


Courses & distances from
stones down creek to post.

1. N. 73 E. 16 1/5
2. N. 62 E. 36.
3. N. 61 E. 46.
4. N. 17 E. 25.
5. N. 55 E. 14.
6. N. 43 E. 45.
7. N. 40. E. 45 3/4 Post.



Draft of one hundred and seventy acres and twenty two perches of land with six per Cent. for Roads situate in Millford township in Mifflin county. Surveyed 3^d November, 1814 in pursuance of a warrant to Samuel Metlin dated 1st September, 1814. Note, the improvement at time of survey, was an old house and family living in it and at least thirty acres of the land in a state of cultivation.

To Richard T. Leech, Esquire
Surveyor General of Pennsylvania.

Michael M. Monahan.

IN TESTIMONY that the above is a copy of the original remaining on file in the Department of Internal Affairs of Pennsylvania, made conformably to an Act of Assembly approved the 16th day of February, 1833, I have hereunto set my Hand and caused the Seal of said Department to be affixed at Harrisburg, this twenty eighth day of September, 1910.

Henry Houck
Secretary of Internal Affairs.